



IN THIS ISSUE

- The Season is in Full Swing
- New Uniforms!-pg.2
- 5th grade Band-pg.3
- Lisle Jr. High Band-pg.3
- Reminders for Students at All Levels -pg.4
- Sr. High Band Schedule-pg.5
- ISU at LSHS-pg.6
- Clinic at LSHS-pg.6
- Jr. High Band Events and Concerts-pg.7
- Jr. High Band Schedule -pg.8
- Marching Band Pillow Offer-pg.9

## Lisle Sr. High Band

1. If your child is still playing on their fifth grade band instrument, you might consider upgrading their instrument. The better quality of the advanced instruments allows your students to perform more difficult music with greater ease and better tone. Several of the private teachers have mentioned that improved mouthpieces, better quality reeds and advanced instruments would improve

students' performance in band.

2. Please check your child's band calendar to avoid conflicts with performances or clinics.

3. A special thank-you to Mrs. Kfoury for her organizing the magazine sale and Mrs. Mogensen for running the Fannie May candy sale!. Your efforts enable the students to save for the Lisle High School Band

Trip scheduled for Spring Break 2013.

4. Please have each band student check their formal wear to make sure it is clean and pressed for February and March performances. The formal wear must be stored properly and hung neatly with the tie and cummerbund.

Continued on page 2

**Excellence is a habit, not a one-time occurrence!**

## From the President

Happy Holidays everyone! I can't believe that another semester has come and gone. The Lisle Bands continue to demonstrate what hard work and perseverance can create. Time and time again I marvel at the talent that is generated from our small community. Thanks to our extremely committed band directors for helping turn our children into fine musicians. In addi-

tion, thanks goes out to anyone who is reading this, for support comes in many ways. Parents who encourage practicing and have brought children to practices/performances, grandparents, aunts and uncles, even brothers and sisters who have attended performances. Thank you, thank you for your support.

Marching Band season stepped off by taking us on their own Magical Mystery Tour with a few Beatles selections. Once again the band delivered energizing performances with precision and musicianship. Lisle High School hosted the combined Jazz Concert this year with Benet Academy. It was a great evening of jazz and fine performances by all.

Continued on page 5

## New Band Uniforms!!

This Fall, the Lisle District 202 Board of Education approved the purchase of new marching band uniforms for Lisle High School. The uniforms we used this year were in their 27<sup>th</sup> year! They have lasted well beyond a typical band uniform because of the excellent care past band members and parents have given them. If you would like a souvenir pillow that is made from the old uniform coats, please see the order form in this newsletter. Students have already been measured by the DeMoulin Company. The uniforms will arrive sometime this Spring. Here is a sketch of what the new uniforms will look like:

Lisle High School  
Lisle, IL  
Mr. Gumina, Dir.

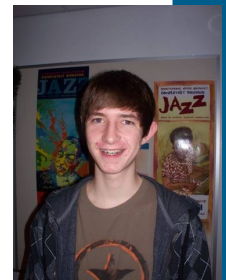


This sketch designed by and property of **DeMOULIN**  
BROS. & CO., Greenville, Illinois 62246 We want to be YOUR uniform company

“To play without passion is inexcusable”  
Ludwig Von Beethoven

### Lisle Sr. High Band Continued from page 1

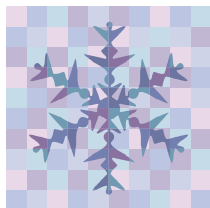
Sophomore band member Ryan Wood was nominated by Mr. Gumina for the **Pride of the Lions Award** in November representing the Fine Arts Department. He has done outstanding work in Jazz Ensemble, Symphonic Band, and Electronic Music. Ryan also helps Mr. Gumina with the band library.



Junior band member Joe Colonna recently represented the LISLE HS Band at the Illinois Music Educators district 9 Honors Festival. The festival was held at Wheaton-Warrenville High School on November, 19th, 2011.

## Lisle Jr. High Band

Congratulations to Mrs. Kiener, Mrs. Kerback, the Lisle JH Symphonic Band and Concert Choir who presented a Veteran's Day "Salute" on Thursday, Nov. 10<sup>th</sup>. The concert was attended by many Veterans, students, parents and residents of Lisle and surrounding communities



**On Tuesday, December 13, 2011**, the Junior High Bands and choirs presented their **annual Winter Concert**. The concert was at the Lisle Junior High auditorium. Great job band and choir students!

Thank you to all who participated in the Lisle JH Band **cookie dough** fund raiser. A special thank you also goes out to Mrs. Pokorny and any parent who helped distribute cookie dough on Monday, Dec. 12<sup>th</sup>.



## 5th Grade Band

It has been an exciting last couple of months for the fifth grade band students at Schiesher! The students spent the final two weeks before winter break "caroling" around the school and offering their talents to many of the 3<sup>rd</sup>, 4<sup>th</sup>, and 5<sup>th</sup> grade classrooms. They have now begun after-school re-

hearsals with the entire fifth grade band it has been exciting to finally get everybody together in one room at the same time! The students are preparing for their first performance on **Tuesday, January 24<sup>th</sup>!**

The 5<sup>th</sup> Grade Band will also be performing at the District Band Festival on **Wednesday,**

**March 21<sup>st</sup>.**

The 5<sup>th</sup> Grade Band will begin selling chocolate Easter bunnies on **February 14<sup>th</sup>**. The bunnies will be delivered just in time for Easter. Any parents interested in assisting with this fundraiser should contact Mr. Schraub.



Freshman band member Sarah Mogensen was nominated by Mr. Schraub for the **Pride of the Lions Award** in January for her outstanding work in Jazz Band. Sarah is the lead trumpet player in Jazz Band and has gone above and beyond all year in both her musicianship and her leadership. Congratulations Sarah!

# From the President Continued from page 1

The Junior High Band performances, under the direction of Mrs. Kiener-Barnett and Mr. Schraub, have been equally strong. The growth of these young adults in four short months is amazing. The Veteran's Day Concert was very moving and stirred patriotism in us all. The Lisle Ross Bishop VFW was represented and helped create a truly a special evening. The Winter concert was very enjoyable. The Jr. High bands and choirs presented an evening of holiday music which ended with singing White Christmas which is always a crowd pleaser.

Looking ahead, the High School Pep Band is revving it up at the H.S. Basketball games, pit band begins working on the musical Beauty and the Beast, and the Jr.

High students prepare for solo contest, jazz contest and band contest. Please mark your calendars and make plans to attend Cabaret Night on February 18<sup>th</sup> at the high school. It is a major fundraiser for LBPO and is truly "an event". In addition to great music from the jazz band grades 6-12, there will be various raffle and silent auction items that are always enticing. Even if your child isn't in a jazz band, please come and check out this wonderful night of music. Tickets will be coming soon.

On behalf of the LBPO, thank you parents for the unending commitment and support. Everything that happens for our band programs, beyond the directors, is all done by volunteers. The LBPO would only be a shad-

ow of what we are if we didn't have parent help. I just told my boss recently that, "sometimes life makes decisions for you." Having said that, I know how precious time is. The LBPO always welcomes your help. We would be appreciative with any time you can give.

Best Regards,

David Lange



## Reminders for Students at all Levels

1. The instrumental music staff strongly encourages all students to take private lessons. The lessons can benefit both the student who needs a little extra help as well as the student who wishes to go beyond the required course work. An updated private teacher list is available from your child's band director and online at the band website [www.lisle202.net/band/index.html](http://www.lisle202.net/band/index.html). If you have any questions please see Mr. Gumina, Ms. Kiener or Mr. Schraub.

2. Please double check to make sure the instrumental students have all the necessary supplies required by their instructor (i.e. reeds, reed guards, oil, cleaning swabs and music stands). Also, please check to see if your child has the proper cleaning supplies (and is using them), as well as a name tag on their case. Proper maintenance can save you money. Have you seen your musician clean out their instrument lately?

3. If your child is in 8th Grade or High School and still playing on their 5th Grade band instrument, you might consider upgrading their instrument. The better quality of the advanced instruments allows your student to perform more difficult music with greater ease and tone.



## High School Music Calendar

February 2 TH	6:15 p.m.	Pep Band
February 4 S	All Day	New Trier Jazz Festival - Jazz Band, Jazz Combo
February 6 M	7:30 p.m.	Band Parent General Meeting - HS Conference Room
February 9 TH	7:00-9:30 p.m.	Evening Band Rehearsal - Symphonic Band starts
February 10 F	6:15 p.m.	Pep Band
February 15 W	7:30 p.m.	H.S. Band Concert - Lisle H. S. Auditorium
February 18 S	8:00 a.m.-10:00 p.m.	Cabaret Night at H.S. South Gym and commons
Feb. 27 M	All-Day	HS Jazz Ensemble to UIC Jazz Festival
March 3 S	All Day	I.H.S.A. Solo & Ensemble Contest (volunteer only)
March 6 T	7:30 p.m.	Band Parent General Meeting - HS Conference Room
March 10 Sat	All Day	Elk Grove HS Percussion Festival
March 12 M	8:00 a.m.-8:00 p.m.	I-8 Honor Band Festival -selected students (Plano HS)
March 20 T	7:45 -10:00 p.m.	Band Combined Rehearsal - Concert Band starts
March 21 W	7:00 p.m.	5-12 Band Festival in Sr. High South Gym
April 2 M	7:30 p.m.	Band Parent General Meeting - HS Conference Room
April 10 T	6:15 a.m.-11:30 a.m.	HS Concert Band to Vandercook College
April 30 M	7:30 p.m.	Band Parent General Meeting - HS Conference Room
May 2 W	6:30 p.m.	H. S. Band Banquet (H.S. Commons)
May 14 M	7:30 p.m.	H.S. Band Concert - Auditorium
May 23 W	7:30 p.m.	H. S. Jazz Concert - Auditorium
June 1 F	6:30 p.m.	Commencement ( Symphonic, Percussion, Select Concert Band Members)

**Cabaret Night**  
Required of All HS  
Band Students -  
Most required to  
work during some  
part the evening -  
6:00 pm.-10:30 p.m.  
Some may work dur-  
ing the day for deco-  
rations 9 am - 3 pm

## **CABARET NIGHT - FEBRUARY 18TH**

### **HE'S LOOKING FOR YOU!**



## ISU Jazz Ensemble at LSHS



On Thursday, November 12, 2011, the Illinois State University Jazz Ensemble visited Lisle HS and thrilled us with an exciting and intimate jazz concert. The group is led by Dr. Tom Marko and featured saxophonist, David Hagelanz. Also featured with the ISU Jazz Ensemble was recent alumni, Joey Blunk on the trumpet.

## Woodwind Expert Gives Clinic

On Monday, December 7, 2011, Mr. Tevis Laukat, woodwind expert and owner of Cannonball Instruments, treated our Jazz Ensemble, Jazz Band, Symphonic Band woodwinds, and a few Concert Band woodwinds to a couple of clinics about jazz style, improvisation, woodwind construction, and the music business. His visit was sponsored by Quinlan & Fabish Music Co.



# Needed for Cabaret Night: Large Baskets

The cabaret Night Committee is in need of larger gift baskets to be used for the Top Hat Raffle. If you have any large size gift baskets that you would like to donate, please contact Sheila Liss at [ron.liss@comcast.net](mailto:ron.liss@comcast.net). Baskets larger than approximately 18" length x 18" width are most useful. Thanks for your help!



## Jr. High IGMSA Events & Concerts

All junior high band students are required to perform a solo at the **IGSMA District 7 Solo/Ensemble Contest**.

This school year's contest date is **Saturday, February 11, 2012**, at Lace School in Darien. Please be sure your son or daughter practices 2-3 times with his/her accompanist before the Saturday, February 11<sup>th</sup> contest. All students have been given their exact performance time and room number.

In addition to the Solo/

Ensemble Contest, the Junior High Concert and Symphonic Band students are preparing for their upcoming performances. The Symphonic Band will perform at the **IGSMA District Band Contest on Saturday, March 17**. Both the Symphonic and Concert Bands will perform at the **Lisle District Band Festival on Wednesday, March 21**.

Jazz Band One will be performing at the **IGSMA Jazz Contest on Saturday,**

**March 3<sup>rd</sup>** at Herrick Middle School. Jazz Band One and Jazz Band "Too" will be performing at our annual "**Cabaret Night**" on **Saturday, February 18<sup>th</sup>**. JH band parents, please consider attending and/or volunteering for Cabaret Night even if your son/daughter is not in the Jazz Band. It is a wonderful night of great music, good snacks and desserts. This is a nice, family event - and a huge fundraiser for the district band program. Mark your calendars!

# Lisle Jr. High Band Schedule

February 11 -	Solo & Ensemble Contest -Lace School, Darien (all band students)
February 18 -	Cabaret Night at HS (both Jazz Bands)
March 3 -	IGSMA Jazz Contest for Jazz Band 1 - Herrick MS, Downers Grove
March 17 -	IGSMA Band contest for Symphonic Band - Westfield MS, Bloomindale
March 21 -	District Band Festival - 7:00 pm at HS (all bands)
April 23 -	Concert Band performs at Schiesher 1:15 pm
May 17 -	Spring Concert/Awards 7:00 PM at JH (all bands)

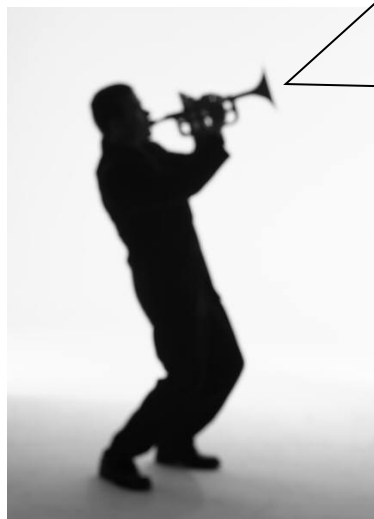


## PARENT WANTED

We need a parent volunteer recruiter to understudy for Cabaret Night.

Contact Martha Koch for details.  
630 969-8039

[jeffmartha@att.net](mailto:jeffmartha@att.net)



## Own a Lisle High School Marching Band Souvenir Pillow for \$25!



Lisle School District is purchasing new marching band uniforms for the beginning of the 2011-2012 school year. The DeMoulin Company, who designed and constructed our previous uniforms (and our new ones), are able to make souvenir pillows from our old uniform coats. This is a great keepsake for any current band member, alumni, or parent. *Proceeds go to the LBPO Patron Drive!*

Priced at just above cost, the LBPO is now accepting orders for this once-in-a-lifetime chance to own and cherish a piece of Lisle High School Band history. *(Please use order form below and turn in by 2/24/12.)*

---

Name: \_\_\_\_\_ Phone# \_\_\_\_\_

# of pillows ordered (\$25 each): \_\_\_\_\_

Amount enclosed: \$ \_\_\_\_\_

Please send orders to: Mr. Gumina, Lisle HS, 1800 Short St. Lisle, 60532

Please make checks payable to: LBPO

## *LBPO Board Officers and Committee Chairs*

**Directors:** Scott Gumina, Lisa Kiener-Barnett, and Dan Schraub

**President:** David Lange

**Vice-President:** Cathy Anderson

**Recording Secretary:** Mary Kay Simpson

**Treasurer:** Cara Casiglio

**HS Fall Magazine Sale:** Jennifer Kfoury

**Newsletter:** Lisa C. Ruby-Trzeciak

**HS Fannie May Sale:** Cindy Mogensen

**Cabaret Night:** Laura Reeves

Dear Patrons,

Visit us on the WEB!:  
[www.lisle202.net/band/  
index.html](http://www.lisle202.net/band/index.html)

Please remember that Mr. Gumina created and maintains a Lisle District 202 Bands web-site. Please put it in your favorites and check for things like our recent pictures, lesson schedules, course offerings, curriculum, music-related links, etc.