

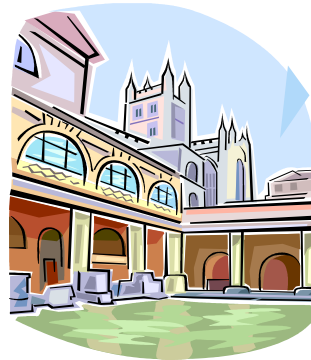
MATERIALS & OTHER INFORMATION

Please come to class prepared everyday. If you do not then it will count as a Tardy. You will need:

- ~Something to write with (pencils are needed for Tests)
- ~Spiral Notebook
- ~Your textbook
- *There Are No Children Here (TANCH)

*Keep a copy of this sheet in your folder/binder at all times.

** I reserve the right to change these policies and rules at any time during the



Ms. Wallenberg
Room 200

Phone: 493-8339

E-Mail: mwallenberg@lisle202.org

"Social Movements are at once the symptoms and the instruments of progress. Ignore them and the statesmanship is irrelevant; fail to use them and it is weak."

SOCIOLOGY SYLLABUS

Ms. Wallenberg
Room 200



"To understand the true quality of people, you must look into their minds, and examine their pursuits and aversions."

~ Marcus Aurelius

CLASS SYNOPSIS & ACTIVITIES

This course is designed to introduce you to the study of sociology. Sociology is the science that studies human society and social behavior, mainly focusing on how people relate to one another and influence each other's behavior. The study of sociology focuses on the group rather than the individual. Throughout the semester we will be studying such topics as diversity, culture, the family, adolescence in society, deviance and criminal behavior, and social inequality.

This course will **NOT** consist of you just reading a chapter and answering the questions at the end! Although that may be part of an activity, you will also be working with small groups or the whole class doing research, writing, debating, role-playing, projects, discussions, and films. Be prepared to work when you come to this class!

Rules

Keep all objects (both body and inanimate) to yourself. This means no punching, hitting, and throwing things at other students.

There is no cussing in this class. If it rhymes with mass, ham, witch, bell, buck, hit, mastered, or lick you will receive a detention. There are no combinations of these words allowed!!!

Your cell phone is **NOT** permitted in this class. If I catch you with one then you will receive a detention. I will get your phone until the end of the day. If I catch you with a cell phone during test times then you will receive a detention, a phone call to your parents, and an "F" on the test. **No exceptions.**

I-Pods or any other **electronic devices** are **NOT** allowed in class as dictated by new school rules.

If you act like a maturing young adult then I will treat you like one. If you act like a 4 year old then I will treat you like one. It's your choice.

Respect others while they are speaking. Everyone has an equal right to express their opinion even if you do not agree with their opinion. There will be no demeaning language towards others used in this classroom.

Additional rules of conduct are set forth in the *Lisle Student Handbook*

Grade Scale

Work: Assignments including reading and questions, short essays, written responses, participation, and projects

Chapter Tests: There will be some sort of evaluation at the end of each chapter.

Assignments will be given a point value: total points at the end of each quarter will determine your grade. The grading scale will be 100-93%=A, 92-85%=B, 84-75%=C, 74-67%=D, = 66-0% F. Se-

mester grades are determined by 40%= 1st Quarter, 40%= 2nd Quarter, 20%= Final Exam.

Attendance & Make-Up Work

Since most of you are junior and seniors, sociology is treated very much like an introductory college course.

Make Up Work:

Homework: If it is late I will not accept it. You will receive a "0". If you are absent then you will have that amount of days to complete it. Absent 1 day means you get 1 day.

Projects: For every day the project is late it will automatically go down a letter grade. If you are absent on the day the projects are due then it is due the day you come back. You will have more than enough time to do projects so if it is due on Friday and you are gone that Monday... You will still need to turn it in on Friday. This does not apply to the Final TANCH project or the Social Stratification Portfolio.

Tests: You will have **1 week from the time of your return to make up the test.** If you do not make up the test in that time frame then you will receive a "0".

I take attendance at the beginning of the hour. If you come in after I have taken attendance you will be marked absent for the hour; unless you have a pass from another teacher. **Being Tardy means that you are not in this class before the end of the bell WITH YOUR MATERIALS.**